



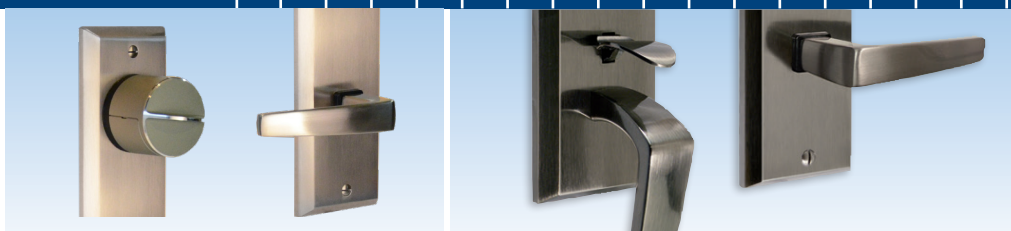
WINDOW TECHNOLOGY
DOOR TECHNOLOGY
AUTOMATIC ENTRANCE SYSTEMS
BUILDING MANAGEMENT SYSTEMS



DOOR TECHNOLOGY – ORDER CATALOG | SECTION 03.3



SECURY Automatic Door Lock & Gripset Handle



Securing technology for you







03.3

SECURY Automatic Door Lock & Gripset Handle

SECURY Automatic Door Lock	03.3.5
Automatic Extension	03.3.6
Filler Pieces	03.3.7
Mortise Door lock	03.3.8
BERKELEY Gripset Handle	03.3.9
Smart locks.....	03.3.10
Strike Plates	03.3.14
Accessories	03.3.17
Wood Mount Display.....	03.3.23



SECURY Automatic Door Lock

for gripset handles and North American cylinder



Unlocked



Locked

USE WITH GRIPSET HANDLES ONLY

SECURY Automatic Door Lock for Gripset Handle

Description	Backset	Color	PU	Part Number
Door lock for 6' 8" doors	60mm	SS	5	6-35185-01-R-8B
Door lock for 8' doors	60mm	SS	5	6-35185-02-R-8B

PU = Packaging Unit

Simply Close the Door!

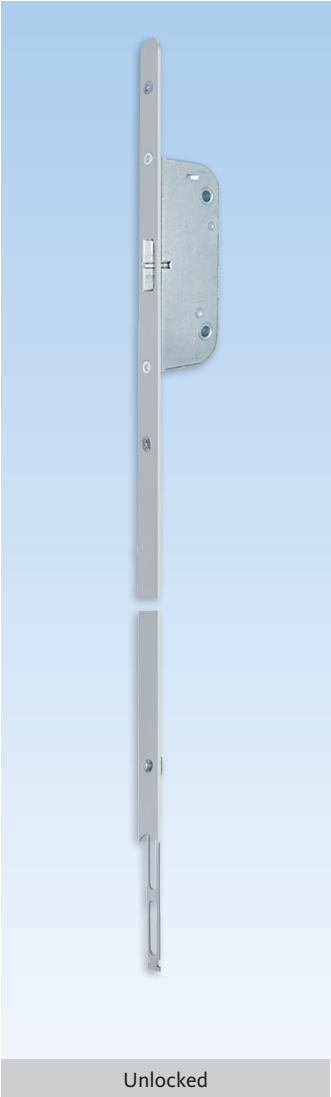
As soon as the door pulled shut, the Automatic latchbolts instantly throw 20mm and are secured to prevent them being forced back. By turning the key or the knob, the center deadbolt will engage and lock the top and bottom latchbolts to become a **3-deadbolt locking system**.

Additional information

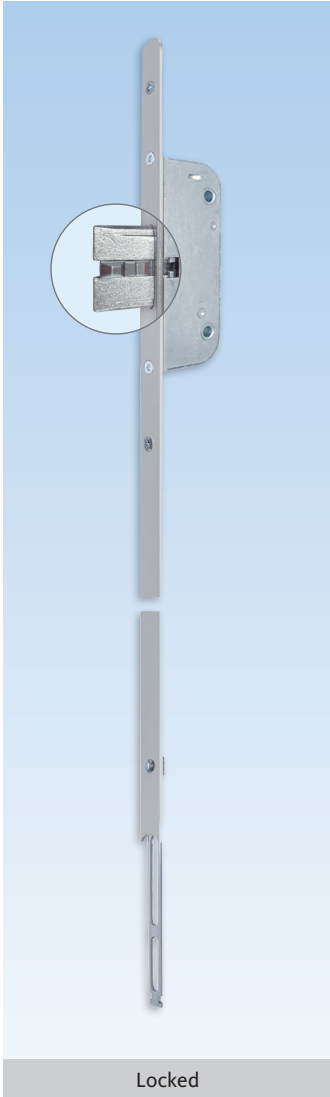
- 3-point, one piece locking system for 6' 8" and 8' doors
- Heavy duty mortise construction
- Locking by US-cylinder with 90° turn of key or thumb-turn
- No lifting of handle to engage locking points
- Top and bottom Automatic latchbolt projection from 10 to 20mm:
 - Provides security
 - Protects the door
- 1" (25mm) draw on deadbolt with baby sitting function
- Non handed, latch easily reversible
- 8mm square spindle
- 92mm centres (spindle to cylinder)
- Handle height variable (36" recommended)
- 16mm stainless steel faceplate with radius ends for easy installation and cleaner look
- Same hardware groove detail throughout our entire door lock program (jig, router base and bits available)
- Extension with additional lock point is available for doors taller than 8'
- To be used only with FERCO gripset handle

Automatic Extension

with Additional Latchbolt



Unlocked



Locked

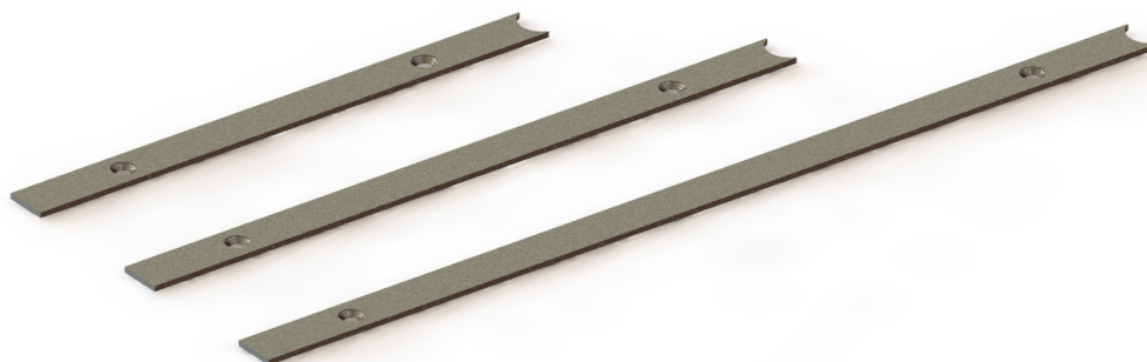
Extension with Additional Latchbolt			
Description	Color	PU	Part Number
525mm extension with rounded end	Stainless Steel	5	6-33479-04-0-8B
800mm extension with rounded end	Stainless Steel	1	6-C5078-00-0-8B
* = Color		PU = Packaging Unit	

Additional information

- Tapered latch always engaging in strike plate
- 16mm stainless steel faceplate with radius end for easy installation and cleaner look
- Additional locking point for doors taller than 8'
- To be used with GU-SECURY Automatic door Locks

Filler pieces

Round to square



Filler Pieces

Description	PU	Part Number
Filler piece 193,7mm	1	9-C4340-19-0-8B
Filler piece 245,9mm	1	9-C4342-24-0-8B
Filler piece 342,3mm	1	9-C4342-34-0-8B

Additional information

- Made of stainless steel
- To be used with radius end locks and extensions

Formulas to select filler length:

- Bottom:
L = Handle height - 671,7mm
- Top 1590mm lock:
L = Door height - handle height - extension(s) length - 920,7mm
- Top 1900mm lock:
L = Door height - handle height - extension(s) length - 1230,7mm

03
3

Mortise Door Lock

with Latch and Deadbolt



Unlocked



Locked

Mortise Door Lock for Gripset Handle

Description	Color	PU	Part Number
Gripset Mortise door lock	Stainless Steel		6-C4888-XX-0-8B
* = Color		PU = Packaging Unit	

Additional information

- Heavy duty mortise construction with reinforced lever return spring system
- Locking by US-cylinder with 90° turn of key or thumb-turn to engage the 1" (25mm) deadbolt
- Non-handed, latch easily reversible
- 8mm square spindle
- 92mm centres (spindle to cylinder)
- 16mm stainless steel faceplate with radius ends for easy installation and cleaner look
- Same hardware groove detail throughout our entire door lock program (jig, router base and bits available)
- Ideal for exterior and interior door applications
- To be used with gripset handle set (US-cylinder above handle)

BERKELEY

Solid Brass Gripset Handle



BERKELEY Series

Description	PU	Part Number
Gripset active for 45mm (1 3/4") thick door (cylinder included)	1	K-C2070-00-0-*
Grip set for smart lock	1	K-C2070-D0-0-*

* = Color

PU = Packaging Unit

01 = Satin Nickel, 25 = Dark Bronze, 28 = Pewter, 6 = Black



Additional information

- Solid forged brass
- US-cylinder with standard Schlage "C" keyway
- 90° locking with thumb-turn
- Non-handed
- Easy to install
- Weather proof gasket
- Stainless steel set screw on interior lever to secure handle
- Easily converts to inactive handle, using dummy conversion kit K-C2056-00-0-*
- For 1 3/4" thick doors
- For 2 1/4" thick doors, use actuator conversion kit K-C2054-57-0- *
- Use with SECURY Automatic gears: 6-35185-01-R-8B and 6-35185-02-R-8B
- Compatible with Danalock V3 smart lock
- Jig template available for handle hole cutout. See tools catalogue for details

**Smart lock**

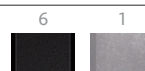
Description	PU	Part Number
Danalock V3 Z-Wave	1	K-C0380-00-0-1
Danalock V3 Bluetooth	1	K-C0380-01-0-*
* = Color		PU = Packaging Unit
1 = Silver, 6 = Black		

**Additional information**

- 4 X CR123A batteries (Included)
- Bluetooth 4.2 (Danalock app)
- Z-Wave (Automation hub - only available in Silver finish)
- 256bit AES encryption level
- No cut-out modification required (retro-fit)
- Compatible with Berkeley handles

**Bluetooth keypad**

Description	PU	Part Number
Danapad V3	1	6-C9407-00-0-X
* = Color		PU = Packaging Unit
1 = Silver, 6 = Black		

**Additional information**

- 4 X AAA batteries (included)
- Bluetooth 4.2
- 256bit AES encryption level
- Compatible with smart lock (Danalock V3) and Universal Module

**Danalock Remote Access**

Description	PU	Part Number
Danabridge V3	1	6-C9402-00-0-0

Additional information

- 53 mm x 53 mm x 32 mm / Weighs 36 g
- USB power supply
- Add remote access to smart locks (Danalock or Universal Module)
- 2 Smart locks can be controlled with one Danabridge (via Bluetooth 4.2)
- Communication with Wi-Fi 802.11b/g/n

03
3**Danalock Accessories**

Description	PU	Part Number
Danalock black inner ring	1	9-C0553-00-0-6



Danalock Accessories

Description	PU	Part Number
U Bracket	1	9-C0552-00-0-6

Additional information

- Replacement part for K-C0380-00-0-*



Danalock Accessories

Description	PU	Part Number
M4 button hex screws	4	9-C0967-04-0-8

Additional information

- Replacement part for K-C0380-00-0-*

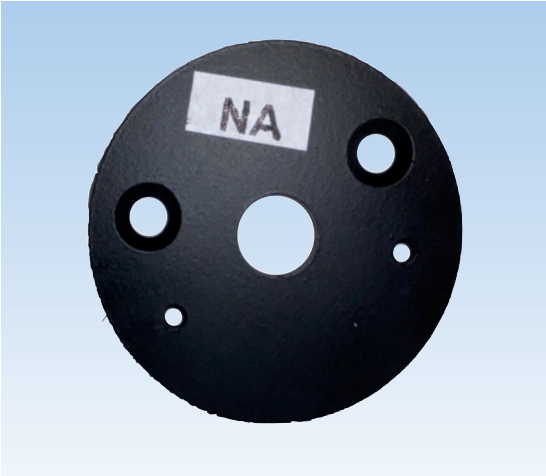


Danalock Accessories

Description	PU	Part Number
Green Insert	1	9-C0558-00-0-0

Additional information

- Replacement part for K-C0380-00-0-*



Danalock Accessories		
Description	PU	Part Number
Black spacer NA	1	9-C0545-00-0-6

Additional information

- Replacement part for K-C0380-XX-0-*



Danalock Accessories		
Description	PU	Part Number
Black spacer EU 6mm (PZ)	1	9-C0551-06-0-6

Additional information

- Replacement part for K-C0380-00-0-1



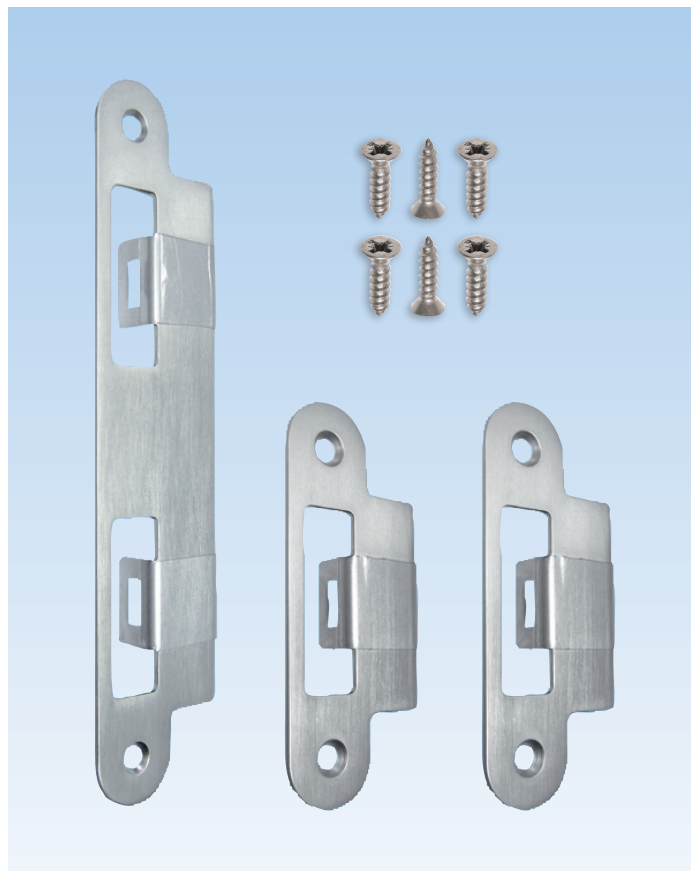
Danalock Accessories		
Description	PU	Part Number
Black spacer EU (PZ)	1	9-C0551-00-0-6

Additional information

- Replacement part for K-C0380-00-0-1

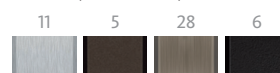
Strike Plates

for Door Lock



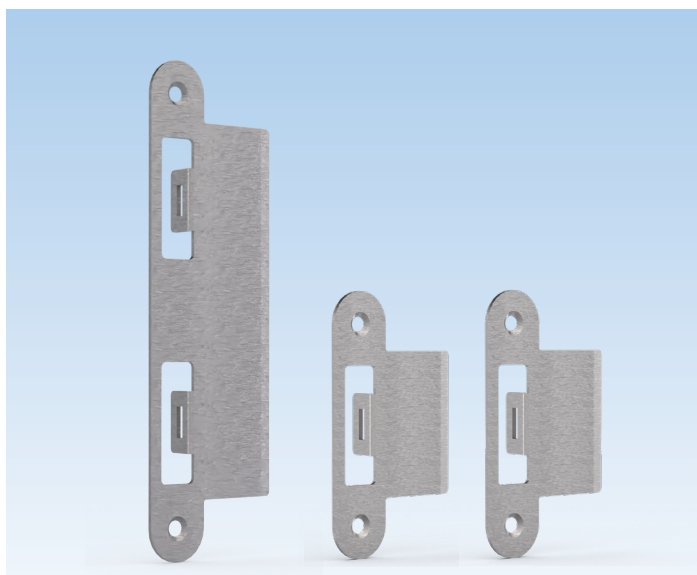
Bag of Strike Plates

Description	PU	Part Number
Bag of strike plates for 45mm (1 3/4") thick doors	50	K-C4774-45-0-*
Bag of strike plates for 57mm (2 1/4") thick doors	50	K-C4775-57-0-*
* = Color		PU = Packaging Unit
11 = Satin Nickel, 5 = Dark Bronze, 28 = Pewter, 6 = Black		



Additional information

- Solid brass (28) or stainless steel (5, 6, 11)
- Bag contains:
 - 1 middle striker with extended lip and clear protective film
 - 2 top and bottom strikers with extended lip and clear protective film
 - 6 screws
- Non-handed
- Available in handle matching finishes
- For use with SECURY Automatic door locks



Bag of Strike Plates

Description	PU	Part Number
Bag of strike plates for 76mm (3") thick doors	1	K-C4777-59-0-*
* = Color		PU = Packaging Unit
8B = Stainless Steel		



Additional information

- Made in stainless steel
- Bag contains:
 - 1 middle striker with extended lip
 - 2 top and bottom strikers with extended lip
- Non-handed
- For use with GU-SECURY Automatic door locks

Strike Plates
for Door Lock



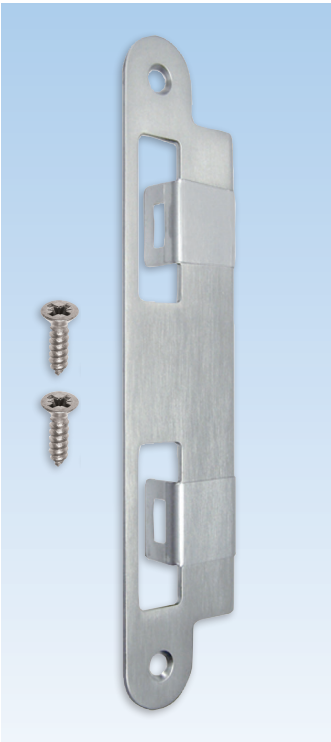
Top and Bottom Striker with Extended Lip

Description	PU	Part Number
Latchbolt strike plate for 45mm (1 3/4") thick doors	10	9-C4776-45-0-*
Latchbolt strike plate for 57mm (2 1/4") thick doors	10	9-C4776-57-0-*
* = Color		PU = Packaging Unit
11 = Satin Nickel, 5 = Dark Bronze, 28 = Pewter, 6 = Black		
<div>115286</div> <div><div></div><div></div><div></div><div></div></div>		

Additional information

- Solid brass (28) or stainless steel (5, 6, 11)
- Non-handed
- With clear protective film
- Available in handle matching finishes
- Two #8 x 5/8 FH/PH screws included
- For use with SECURY Automatic door lock

03
3



Middle Striker with Extended Lip

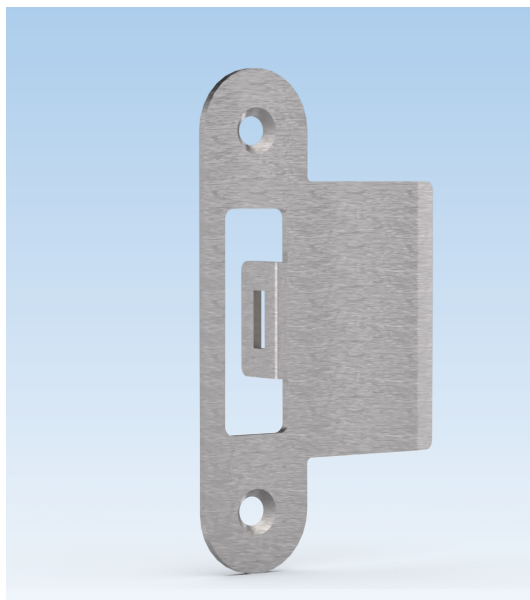
Description	PU	Part Number
Latch and deadbolt strike plate for 45mm (1 3/4") thick doors	10	9-C4777-45-0-*
Latch and deadbolt strike plate for 57mm (2 1/4") thick doors	10	9-C4777-57-0-*
* = Color		PU = Packaging Unit
11 = Satin Nickel, 5 = Dark Bronze, 28 = Pewter, 6 = Black		
<div>115286</div> <div><div></div><div></div><div></div><div></div></div>		

Additional information

- Solid brass (28) or stainless steel (5, 6, 11)
- Non-handed
- With clear protective film
- Available in handle matching finishes
- Two #8 x 5/8 FH/PH screws included
- For use with SECURY SH2, S-Bolt, Automatic and mortise door locks

Strike Plates

for Door Lock



Top and Bottom Striker with Extended Lip

Description	PU	Part Number
Latchbolt strike plate for 76mm (3") thick doors	10	9-C4716-59-0-*

* = Color

PU = Packaging Unit

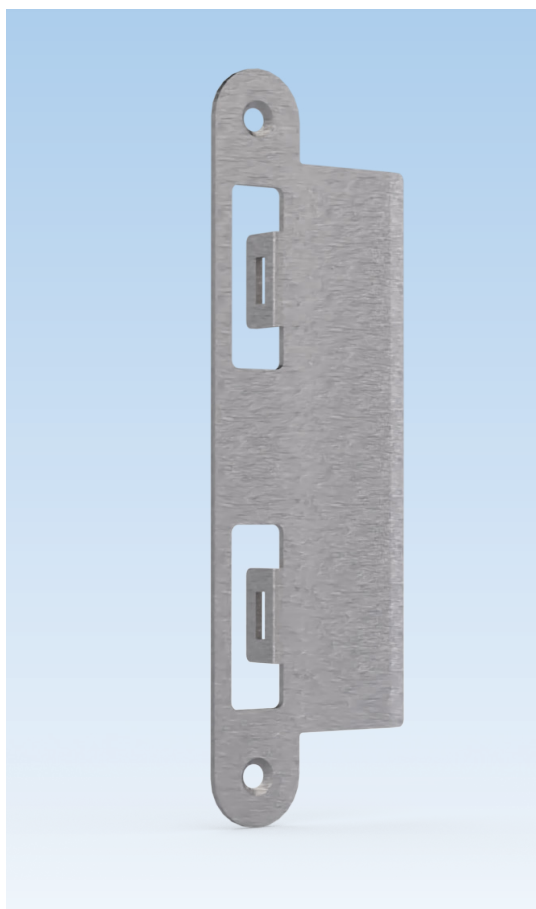
8B = Stainless Steel

8B



Additional information

- Made in stainless steel
- Non-handed
- Two #8 x 5/8 FH/PH screws included
- For use with GU-SECURY Automatic door lock



Middle Striker with Extended Lip

Description	PU	Part Number
Latch and deadbolt strike plate for 76mm (3") thick doors	10	9-C4717-59-0-*

* = Color

PU = Packaging Unit

8B = Stainless Steel

8B



Additional information

- Made in stainless steel
- Non-handed
- Two #8 x 5/8 FH/PH screws included
- For use with GU-SECURY Automatic door lock



Torx 15 T-Key

Description	Color	PU	Part Number
Torx key	Steel	1	H-00346-15-0-0
* = Color		PU = Packaging Unit	

Additional information

- Used for connecting SH2 and Automatic extensions



4mm Allen T-Key

Description	Color	PU	Part Number
Allen key	Steel	1	H-00345-04-0-0
* = Color		PU = Packaging Unit	

Additional information

- Used for reversing Automatic latchbolts on GU-SECURY Automatic lock and extension



Fastening Screws

Description	Color	PU	Part Number
D1 screws	Stainless Steel	1000	9-C5362-32-0-8
* = Color		PU = Packaging Unit	

Additional information

- Stainless steel lock fastening screws
- Type D1 with self-drilling spiral point and high duplex thread with "Quadrex" socket
- Sharp tip for quick drive

Accessories

for Gripset Handles



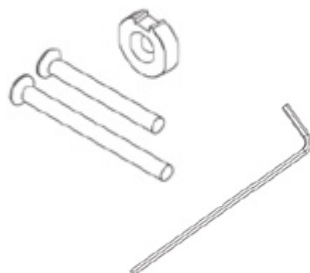
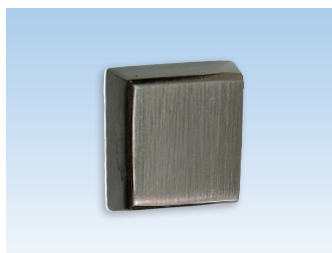
Dummy Conversion Kit

Description	PU	Part Number
Cover ring and screws	1	K-C2056-00-0-*
* = Color		PU = Packaging Unit
01 = Satin Nickel, 25 = Dark Bronze, 28 = Pewter, 6 = Black PC		



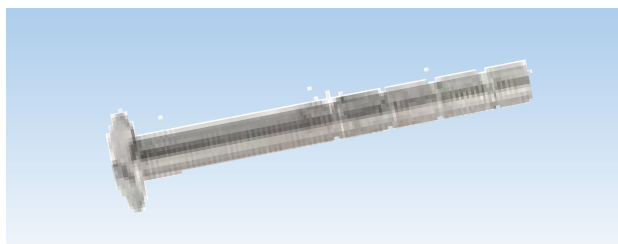
Additional information

- Used to convert the active to dummy
- 3 screws included to lock the mechanism
- For double doors:
 - active door with keyway
 - inactive door with blank cover



Bottom Ring Cap

Description	PU	Part Number
Cap for BERKELEY handle	1	K-C2052-00-0-*
* = Color		PU = Packaging Unit
01 = Satin Nickel, 25 = Dark Bronze, 28 = Pewter, 6 = Black PC		



Re-cuttable M5 Screw

Description	PU	Part Number
M5 x 90mm screws for 41-76 mm thick doors (2 screws are supplied with door handle kit)	1	9-U2510-90-R-*
* = Color		PU = Packaging Unit
01 = Satin Nickel, 25 = Dark Bronze, 28 = Pewter, 6 = Black PC		



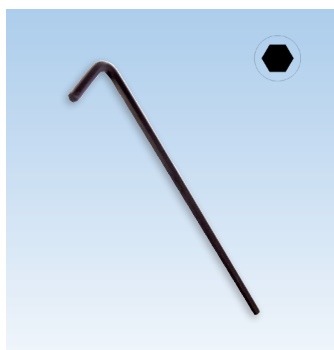
Accessories

for Gripset Handles



Set Screw

Description	Color	PU	Part Number
M5 set screw (1 screw is included with interior handle)	Stainless Steel	1	9-C0527-02-0-8B
* = Color		PU = Packaging Unit	



Allen Key 2,5mm x 100mm

Description	Color	PU	Part Number
Allen key (1 Allen key is supplied with door handle kit)	Black	1	9-C0955-10-0-0
* = Color		PU = Packaging Unit	



Allen T-Key 2,5mm x 152mm

Description	Color	PU	Part Number
Allen key	Steel	1	6-C0560-20-0-0
* = Color		PU = Packaging Unit	

Additional information

- Used for connecting SH2 and Automatic extensions

Accessories

for Gripset Handles



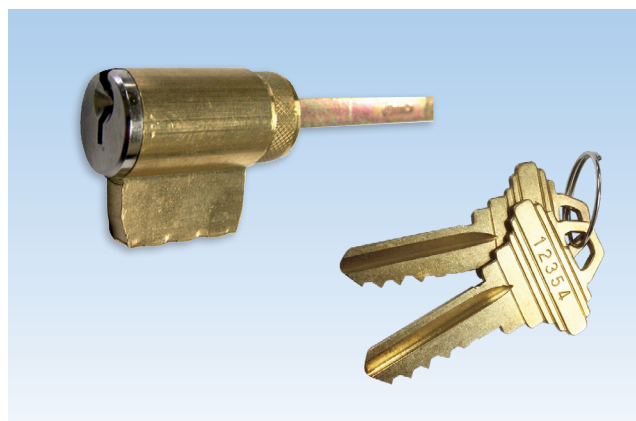
Universal Actuators

Description	Color	PU	Part Number
Kit for 1 3/4" doors (Supplied with gripset handle)	Steel	1	K-C2054-45-0-*
Kit for 2 1/4" doors	Steel	1	K-C2054-57-0-*
Kit for 2 3/4" doors	Steel	1	K-C2054-70-0-*
Kit for 3" doors	Steel	1	K-C2054-76-0-*
* = Color PU = Packaging Unit			
01 = Satin Nickel, 25 = Dark Bronze, 28 = Pewter, 6 = Black PC			



Additional information

- Non-handed
- Accessories included
- Cylinder with longer tail included in kit for 2 3/4" and 3" doors
- For dummy handles, use actuator included, for any door thickness



- ① For 41-57 mm thick doors
- ② For 41-76 mm thick doors

Cylinders Schlage "C" Keyway

Description	Color	PU	Part Number
① Cylinder with 52mm tail and set of two keys	Zinc Dark Bronze	1 1	6-C0971-52-0-1 6-C0971-52-0-25
② Cylinder with 90 mm tail and set of two keys	Zinc Dark Bronze	1 1	6-C0971-90-0-1 6-C0971-90-0-25
* = Color PU = Packaging Unit			

Key Alike Cylinders Schlage "C" Keyway

Description	Color	PU	Part Number
① Cylinder with 52mm tail and set of two keys	Zinc Dark Bronze	1 1	6-C0971-52-9-1 6-C0971-52-9-25
② Cylinder with 90mm tail and set of two keys	Zinc Dark Bronze	1 1	6-C0971-90-9-1 6-C0971-90-9-25
* = Color PU = Packaging Unit			



Berkeley Correction Kit

Description	Color	PU	Part Number
Berkeley Correction Kit	Steel	1	K-C0010-01-0-0
* = Color		PU = Packaging Unit	

Accessories

for Strike Plate



Dust Cup – 25mm

Description	Color	PU	Part Number
Plastic cup	Black	10 100 500	9-C4765-00-0-6 9-C4765-1C-0-6 9-C4765-5C-0-6
* = Color		PU = Packaging Unit	

Additional information

- Use for latch and 2 automatic latches (optional)
- Dimensions:
 - Length: 62mm
 - Width: 19.5mm
 - Depth: 25.8mm



Dust Cup – 15mm

Description	Color	PU	Part Number
Plastic cup	Black	10 100 500	9-C4765-0A-0-6 9-C4765-1C-A-6 9-C4765-5C-A-6
* = Color		PU = Packaging Unit	

Additional information

- Dimensions:
 - Length: 62mm
 - Width: 19.5mm
 - Depth: 16mm



Screws for Strike Plates

Description	PU	Part Number
#8 x 5/8" (16mm) screws	10	K-C4763-16-6-*
* = Color		PU = Packaging Unit
11 = Satin Nickel, 5 = Dark Bronze, 28 = Pewter, 6 = Black		
<div style="display: flex; justify-content: space-around; align-items: center;"> 11 5 28 6 </div> <div style="display: flex; justify-content: space-around; align-items: center;"> </div>		

Additional information

- Bag of 6 screws for strike plates
- #8 x 5/8" FH/PH screws



Construction Handle Set

Description	Color	PU	Part Number
Construction handle	Black	25	K-C9250-25-0-6
* = Color		PU = Packaging Unit	

Additional information

- Reinforced nylon temporary door trim sets
- 8 x 8 x 90mm square spindle included
- 4.2 x 50mm screws included
- For 1 3/4" thick doors
- Locking/Unlocking from inside only



Construction Key

Description	Color	PU	Part Number
Construction key	Black	10	9-U0001-01-0-0
* = Color		PU = Packaging Unit	

Additional information

The construction key is available for those who prefer to install the decorative hardware trim and lever sets on doors after the construction has been completed. Installing the escutcheon plates and levers in the final stage of construction prevents the decorative trim from becoming scratched or damaged.

The construction key has been designed to accommodate multipoint door hardware (8mm square), tilt-turn hardware (7mm square) and lift-slide hardware (10mm square).

Wood Mount Display

for Gripset Handle and Door Lock



Wood Mount Display with Door Lock and BERKELEY Gripset Handle

Description	PU	Part Number
Wood mount display – 45mm (1 3/4") thick	1	K-C9617-00-0-9
Wood mount display – Smart Lock	1	K-C9617-SL-0-9
* = Color		PU = Packaging Unit
01 = Satin Nickel, 25 = Dark Bronze, 28 = Pewter, 6 = Black		
<div><div>01</div><div>25</div><div>28</div><div>6</div></div>		

Additional information

- Wood mount complete with gripset handle and SECURY Automatic sample gear
- Berkeley handle with smart lock with K-C9617-SL-0-9
- When ordering, please add note for finish



WINDOW TECHNOLOGY
DOOR TECHNOLOGY
AUTOMATIC ENTRANCE SYSTEMS
BUILDING MANAGEMENT SYSTEMS

HEAD OFFICE

Ferco Architectural Hardware Inc.
2000, Berlier St.
Laval, QC H7L 4S4
Tel.: 450 973-1437
1 800 355-8810
Fax: 450 973-7661
ferco@ferco.ca

ONTARIO / WESTERN PROVINCES

Tel.: 905 282-9588
1 800 668-5310
Fax: 905 282-9915

UNITED STATES

Tel.: 1 800 927-1097
Fax: 1 888 454-0161

www.ferco.ca

Securing technology for you

